

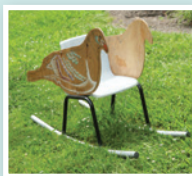
**1 Kate Millington**  
**GREEN ROSES AND BUTTERFLIES**

Screen print, acrylic on board  
**\$3,705**



**6 Simon Gray**  
**A PLACE TO CALL HOME**

Mixed media, recycled wooden furniture, weatherboards, natural materials  
**\$45 - \$250**  
(Individually priced)



**11 Paula Egginton**  
**ROCK A BYE BIRDIE**

Plywood, plastic, acrylic paint, steel  
**\$333 each**  
**\$2,000 all 6**



**16 Jane & Mario Downes**  
**TARAXACUM FOREST**

Mild and galvanised steel  
**\$3,000 - \$5,000 each as marked**



**21 Zoe Nash**  
**FINDING HOME**

Sourced and found mixed media  
**\$3,950**



**26 Bruce Hubbard**  
**TOWARDS ECOLOGY**

Mild steel, copper, railway sleeper  
**\$1,800**



**31 Marlyne Jackson**  
**BENEATH THE WILLOW TREE**

Wool, yarn, wire, polystyrene, table tennis balls.  
**NFS**



**36 Katherine Batchelor**  
**MIGRATION**

Aluminium composite, vinyl decals  
**\$100 each**



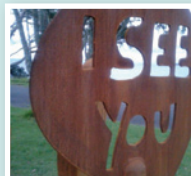
**41 Ian Fewtrell**  
**HUNTING WILD BOAR**

Corrugated iron  
**Piglet \$455, Medium boar \$695, Large boar \$810, Pig dog \$810**



**1 Christian Nicolson**  
**SHOT DOWN**

Solid macrocarpa, concrete and steel footings  
**\$22,000**



**6 Joachim Kreitmair**  
**PERCEPTION**

Mild steel plate  
**\$22,000**



**11 Bruce Young**  
**HORSE CANTERING GATE**

Hot dipped galvanised steel  
**\$2,500**



**2 Matt Williams**  
**EDIFICE**

Powder coated mild steel, concrete, bearings  
**\$4,800**



**7 Janette Cervin**  
**HYDRANGEAS**

Acrylic and resin on aluminium  
**\$4,200 each**



**12 Jan Gosling**  
**FLORAL SYMPHONY**

Oamaru stone  
**\$2,800**



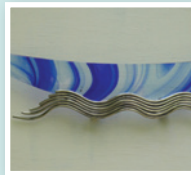
**17 Murray Swan**  
**REGENERATION**

Stainless steel (Electropolished), Titanium, Copper  
**\$2,900**



**22 John Mulholland**  
**UNITS OF MEASURE**

Aluminium plate, automotive paint finish  
**\$3,500**



**27 Darryl Fagence**  
**JOURNEY**

Formed glass, stainless steel  
**\$375 each**



**32 Bridget Mintoft**  
**REDEMPTION**

Wood, paint, varnish, brass, copper, cast concrete (cement, vermiculite, rebar reinforcing) concrete footings  
**POA**



**37 Denise Marshall**  
**THE SECRET LIFE OF TREES**

Fallen timber( Forest floor gleanings)  
**Commissions available**



**42 Michael Kennedy**  
**RISING DAMP**

Found materials from Kaipara Coast site  
**\$3,000**



**2 John Mulholland**  
**LOVE OF AIR**

Steel plate, automotive paint  
**\$28,000**



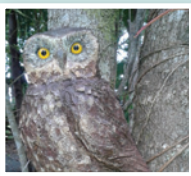
**7 Gill Gattfield**  
**BABEL & POSTSCRIPT**

Babel Cut toughened float glass, concrete block (Maquette, ed. 3), Postscript Barbwire  
**Babel POA, Postscript \$800**



**12 Bruce Young**  
**FISH GATE**

Hot dipped galvanised steel  
**\$3,500**



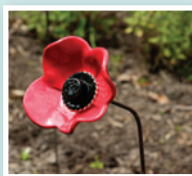
**3 Karen Hart**  
**NATIVE BIRDS**

Ceramic  
**\$350 each**



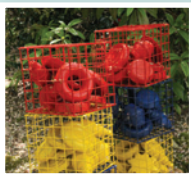
**8 Children from Stella Maris School**  
**BUTTERFLY HOME**

Mixed media  
**NFS (Unpainted shelters available \$ 1,000)**



**13 Ruth Bramble**  
**GRANDMA'S GARDEN POPPIES**

Stoneware clay, steel, glaze  
**\$65 each**



**18 Ann Crane**  
**TWIN TOWERS**

Terracotta, automotive paint, wire mesh  
**\$2,800**



**23 Bruce Young**  
**DRAGONFLY**

Hot dipped galvanised steel  
**\$3,800**



**28 Duncan J Burns**  
**TOTARA LILY**

Totara, Steel Wire, Copper, Painted Glass, Solar Lights, Metalex ( preservative )  
**\$9,700**



**33 Bruce Young**  
**CATS AT PLAY**

Hot dipped galvanised steel  
**\$2,500**



**38 Jay Lloyd**  
**SEAGULLS**

Cast aluminium, stainless steel  
**Small \$980, Medium \$1,800, Large \$3,800**



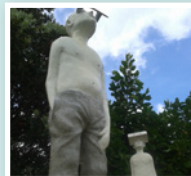
**43 Boud van den Bemd**  
**NATURAL FORM 1, 2, 3**

Macrocarpa  
**\$2,800 each**



**3 Phillippa Kenny**  
**AWAY**

Acrylic, Macrocarpa, Douglas fir, sikkens timber finish, corten steel, stainless 316 fittings  
**Sign post \$2,000, Fence \$1,800**



**8 Ramon Robertson**  
**WEATHERMEN**

Treated pine, concrete, mixed media  
**\$2,700**



**13 Bruce Young**  
**FERN FROND AND TUI GATE**

Hot dipped galvanised steel  
**\$6,000**



**4 Elliot Owen, Andrew Denton, John Mulholland, Boud van den Bemd, Sally Lush, Marlyne Jackson**  
**OUTDOOR DINING**

Various  
**Prices as marked**



**9 Deborah Moss**  
**ODE TO THE KAKABEAK**

Perspex, acrylic exterior paint, waterborne protective UV exterior glaze, powder-coated galvanised steel  
**\$3,995**



**14 Bev Goodwin and Sally Lush**  
**FLOWER FANTASIA**

Fabric flowers  
**\$2,500**



**19 Mark Dimock**  
**TUI CAP**

Steel, epoxy enamel, vinyl transfer  
**\$890**



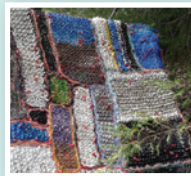
**24 Martyn Hodder**  
**BULLRUSHES**

Macrocarpa, copper, steel  
**\$59.90 each**



**29 Blair Fraser**  
**CONSUMA- PODS**

Glazed Ceramic, wire, rubbish (glass, plastic and metals)  
**\$2,000 all, \$650 Large, \$180 Small**



**34 Margaret Johnston**  
**SLEEP OUT**

Obsolete telecommunication wires, wood  
**\$4,000**



**39 Howard Esler**  
**A PATH TO THE KAIPARA**

Steel, hardwood, paint  
**\$3,000**



**1 Greg Piper**  
**PIWAKAWAKA TOY**

Automotive painted fibreglass, painted steel, stainless steel, rope, PVC pipe  
**\$3,000**



**4 Katherine Batchelor**  
**BOX OF BIRDS**

Wood, galvanised pipe, steel, ceramic  
**\$650 each**



**9 Brendan McGorry**  
**CALL ME I STILL LOVE YOU**

Acrylic, glass, timber iron, cell phone  
**\$24,000**



**14 Phil Bonham**  
**NORFOLK HORN**

Norfolk pine  
**\$22,000**



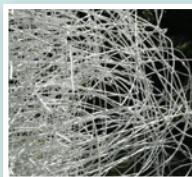
**5 Gina Fergusson**  
**CHOP**

Ceramic, pohutukawa, totara, manuka  
**\$1,120 each**



**10 Geraldine & David Bayly**  
**WHAT IS AT THE TOP OF YOUR LADDER?**

Wood, acrylic paint  
**NFS**



**15 Audrey Boyle**  
**ANCHORAGE**

Kareao (Supplejack), steel  
**\$10,000 ( Includes installation Auckland)**



**20 Mary Paton**  
**GROVE OF NIKAU**

Stoneware ceramic  
**\$630 each**



**25 Darryl Fagence**  
**WING IT**

Formed glass, stainless steel  
**\$390 each**



**30 Sonja van Kerkhoff**  
**THE GOSSAMER PRISON**

Nylon, photoprint on Du-bond  
**Curtain NFS, Plaque \$200**



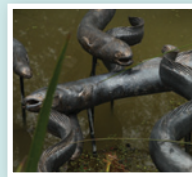
**35 Bruce Young**  
**THE HAWK AND THE MOUSE**

Hot dipped galvanised steel  
**\$3,000**



**40 Darryl Fagence**  
**PACIFIC RING**

Formed gold glass  
**\$675**



**2 Samuel Ludden**  
**TUNA**

Ceramic, steel  
**Large \$495, Medium \$390, Small \$ 295**



**5 Jan Gosling**  
**THE THREE GUARDIANS**

Oamaru stone  
**\$860 each, \$2,200 all three**



**10 Bruce Young & Shona Furman**  
**PEACOCK GATE**

Hot dipped galvanised steel, glass  
**\$14,450**



[www.kaiparacoast.co.nz](http://www.kaiparacoast.co.nz)

1481 Kaipara Coast Highway, PO Box 63, Kaukapakapa 0843  
(Located at Kaipara Coast Plant Centre, 4km north of Kaukapakapa on SH 16)

Phone 09 420 5655 | Email [sculpture@kaiparacoast.co.nz](mailto:sculpture@kaiparacoast.co.nz)

Exhibition curated by Sally Lush

Catalogue photos: Howard Williams & Sally Lush  
Copyright belongs to Kaipara Coast Sculpture Gardens and the individual artists.

Catalogue Design: Joanne Lottering, Design Impact

Thank you to all the artists who have so generously supported Kaipara Coast Sculpture Gardens, we appreciate your support and marvel at your creative ideas.

## Welcome to Kaipara Coast Sculpture Gardens

Kaipara Coast Sculpture Gardens is a unique sculpture trail set in a tranquil, rural, garden oasis. The combined vision and grit of landowners David & Geraldine Bayly, curator Sally Lush and artists has resulted in an inspiring contemporary art treat for locals and visitors.

Against the backdrop of the Kaipara harbour, the one kilometre trail winds through a secluded valley containing a slice of almost every type of iconic New Zealand landscape: mown lawns, fruit tree orchard, grassy slopes, regenerating bush, old farm fences, pine forest, potagers, and ponds. Kaipara Coast Sculpture Gardens brings to life the vision of Kaukapakapa local, David Bayly, who in 1988 learnt to propagate plants on a piece of his father's land.

David bought part of the family farm, and then set up a specialist plant nursery and Garden Centre, building a reputation for quality plants and service. Exhibition 2016, the eighth exhibition at Kaipara Coast Sculpture Gardens features sculpture in wood, metal, stone, glass, fibre, ceramic and installation works that have been selected and developed for each context to make mini-galleries within the valley.

Works are revealed as the path twists and turns, revealing vistas from vantage points where picnic spots and seating invite visitors to rest and contemplate the art and gardens. Exhibition 2016 will run until October 2016 enabling visitors to have a fresh experience of the artworks and gardens as the seasons change.

### About the trail

The Sculpture Trail at Kaipara Coast Sculpture Gardens is an easy 1km walk on gravel paths which are accessible for mountain buggies but not wheelchairs or walking frames.

Allow 1 to 1 1/2 hours to enjoy the walk fully and take in all the sculptures. Don's Conservation Track is a new addition to the trail and has been carved using traditional tools of a shovel, wheelbarrow and rake by David and his father Don Bayly. This track takes you on a winding journey through native forest, along streams and waterfalls and focuses on a conservation message. The track takes around 30mins to walk, with a reasonable level of fitness recommended and is not suitable for pushchairs.

The Trail is open daily from 9am to 5pm with last entry at 4pm. There are many seats along the path to allow for resting and contemplating the views and sculptures. The sculptors have spent many hours of "Blood, sweat and tears" to create these sculptures, please respect the art by not touching or climbing.

No dogs (Except Guide Dogs).

Adults, to keep your children safe please supervise them around the sculptures and ponds as any damages will need to be paid for. To enhance your viewing experience please follow the gravel pathway in numerical order as the trail has been designed to optimise the views of each sculpture. Also, remember to visit the 14 sculpture sites on our entry and exit driveways.

Please respect the environment by not removing any plant material, taking rubbish with you and due to the fire risk, please No Smoking.

### Sales

Sculpture sales at the retail counter.

Prices include GST.

Delivery and installation costs are available from retail. Contact Sally Lush, the curator, 027 260 9486 or Kaipara Coast staff for further details relating to specific sculptures.

While all care has been taken to ensure your safety, you enter the premises at your own risk and Kaipara Coast Sculpture Gardens accept no liability for injury to yourself or the loss or damage to your property.

You also accept that you will pay for any damage incurred by you or members of your party to the sculptures and by entering you agree to these conditions.

**Kaipara**COAST  
sculpture gardens

Exhibition 2016

