

www.kaiparacoast.co.nz

1481 Kaipara Coast Highway, PO Box 63, Kaukapakapa 0843
(Located at Kaipara Coast Plant Centre, 4km north of Kaukapakapa on SH 16)

Phone 09 420 5655 | Email sculpture@kaiparacoast.co.nz

Exhibition curated by Sally Lush

Catalogue photos: Sally Lush

Copyright belongs to Kaipara Coast Sculpture Gardens and the individual artists.

Catalogue Design: Joanne Lottering, Design Impact

Thank you to all the artists who have so generously supported Kaipara Coast Sculpture Gardens, we appreciate your support and marvel at your creative ideas.

Welcome to Kaipara Coast Sculpture Gardens

Kaipara Coast Sculpture Gardens is a unique sculpture trail set in a tranquil, rural, garden oasis. The combined vision and grit of landowners David & Geraldine Bayly, curator Sally Lush and artists has resulted in an inspiring contemporary art treat for locals and visitors.

Against the backdrop of the Kaipara harbour, the one kilometre trail winds through a secluded valley containing a slice of almost every type of iconic New Zealand landscape: mown lawns, fruit tree orchard, grassy slopes, regenerating bush, old farm fences, pine forest, potagers, and ponds. Kaipara Coast Sculpture Gardens brings to life the vision of Kaukapakapa local, David Bayly, who in 1988 learnt to propagate plants on a piece of his father's land.

David bought part of the family farm, and then set up a specialist plant nursery and Garden Centre, building a reputation for quality plants and service. Exhibition 2017, the ninth exhibition at Kaipara Coast Sculpture Gardens features sculpture in wood, metal, stone, glass, fibre, ceramic and installation works that have been selected and developed for each context to make mini-galleries within the valley.

Works are revealed as the path twists and turns, revealing vistas from vantage points where picnic spots and seating invite visitors to rest and contemplate the art and gardens. Exhibition 2017 will run until October 2017 enabling visitors to have a fresh experience of the artworks and gardens as the seasons change.

About the trail

The Sculpture Trail at Kaipara Coast Sculpture Gardens is an easy 1km walk on gravel paths which are accessible for mountain buggies but not wheelchairs or walking frames.

Allow 1 to 1 1/2 hours to enjoy the walk fully and take in all the sculptures. Don's Conservation Track is a new addition to the trail and has been carved using traditional tools of a shovel, wheelbarrow and rake by David and his father Don Bayly. This track takes you on a winding journey through native forest, along streams and waterfalls and focuses on a conservation message. The track takes around 30mins to walk, with a reasonable level of fitness recommended and is not suitable for pushchairs.

The Trail is open daily from 9am to 5pm with last entry at 4pm. There are many seats along the path to allow for resting and contemplating the views and sculptures. The sculptors have spent many hours of "Blood, sweat and tears" to create these sculptures, please respect the art by not touching or climbing.

No dogs (Except Guide Dogs).

Adults, to keep your children safe please supervise them around the sculptures and ponds as any damages will need to be paid for. To enhance your viewing experience please follow the gravel pathway in numerical order as the trail has been designed to optimise the views of each sculpture. Also, remember to visit the 11 sculpture sites on our entry and exit driveways.

Please respect the environment by not removing any plant material, taking rubbish with you and due to the fire risk, please No Smoking.

Sales

Sculpture sales at the retail counter.

Prices include GST.

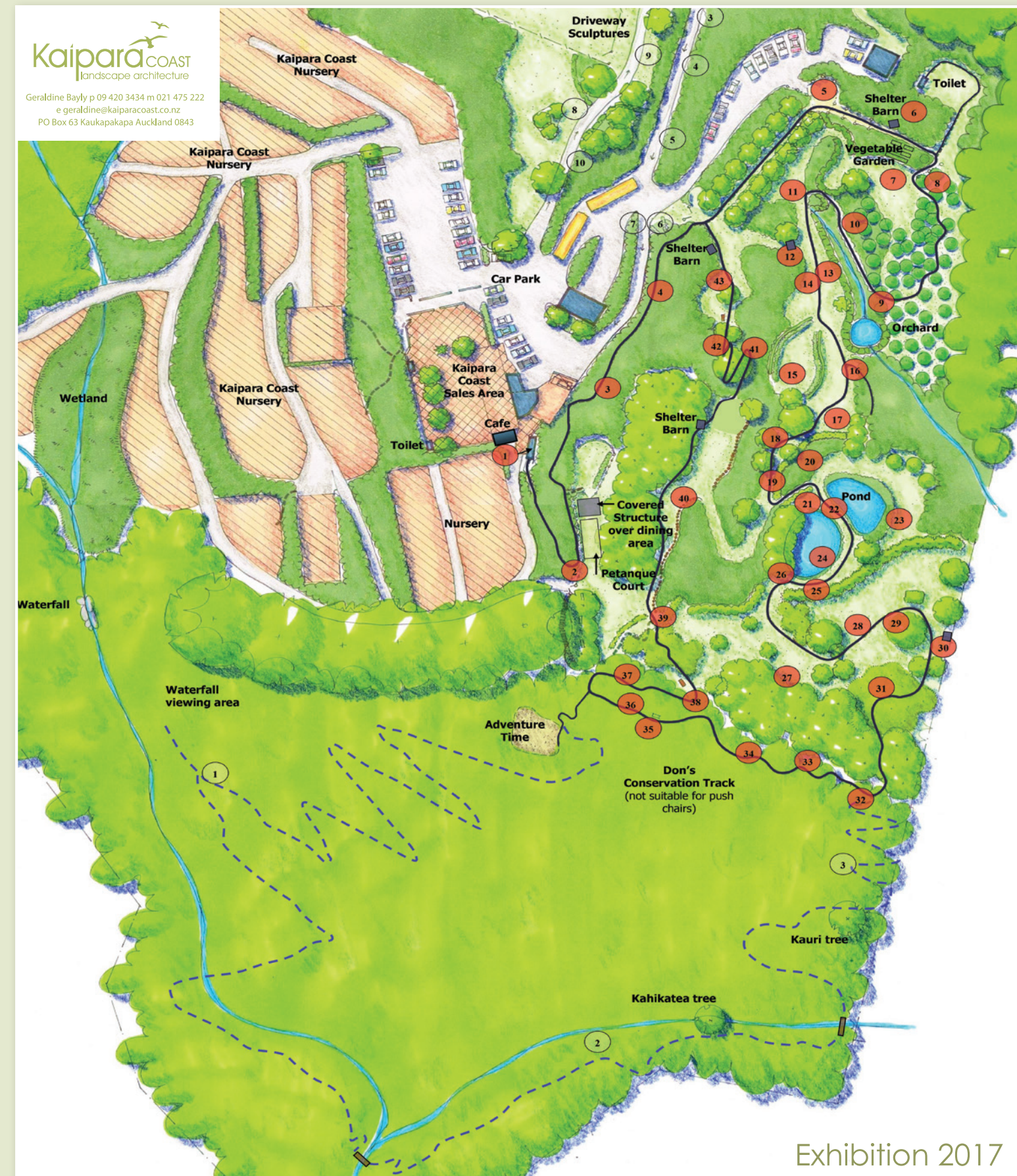
Delivery and installation costs are available from retail. Contact Sally Lush, the curator, 027 260 9486 or Kaipara Coast staff for further details relating to specific sculptures.

While all care has been taken to ensure your safety, you enter the premises at your own risk and Kaipara Coast Sculpture Gardens accept no liability for injury to yourself or the loss or damage to your property.

You also accept that you will pay for any damage incurred by you or members of your party to the sculptures and by entering you agree to these conditions.

Kaipara^{COAST}
sculpture gardens

Exhibition 2017



Kaipara^{COAST}
landscape architecture

Geraldine Bayly p 09 420 3434 m 021 475 222
e geraldine@kaiparacoast.co.nz
PO Box 63 Kaukapakapa Auckland 0843



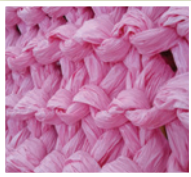
1 Jeff Thomson
SHRED
Shredded paper, wire
NFS



6 Kaukapakapa Primary School Room 7
INVERTEBRATES INVASION
Recycled found materials, papier mache, acrylic paint, polyurethane
NFS



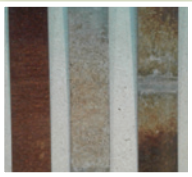
11 Kirsten Newton
I SPY
Seat found plastic, metal, resin
Panel plastic, metal
Seat \$4,000 each
Panel \$POA



16 Mia Hamilton
IT'S A GIRL
Plastic, wood
\$3,000



21 Margaret Sumich
JOURNEYS AND ARRIVALS
Wood fired clay, river stones, recycled chain, wire, found materials
\$1,500 complete or \$400 each



26 Rick Urban
RIBBONS OF RUST
Rusted metal
\$1,750



31 Philippa Nielsen
TREE CONVERSATIONS
Pink and yellow string line
POA (can be recreated for an artist's fee)



36 Murray Swan
RAY
Stainless steel, titanium, copper
\$1,950



41 Murray Swan
MIHAMIHA
Stainless steel, titanium, copper
\$3,400



1 Christian Nicolson
SHOT DOWN
Solid macrocarpa, concrete and steel footings
\$11,000



5 Joachim Kreitmair
PERCEPTION
Mild steel plate
\$22,000



9 Bruce Young
FISH GATE
Hot dipped galvanised steel
\$3,500



2 Margaret Johnston
IN YOUR FACE
690 Knitted plastic bags
\$1,500



7 Bassam (Bruce) W. Hubbard
ANTIPODES (BLACK BATS AND POLES)
Hardwood, oil paint, reinforcing steel, alloy, concrete, brass
\$2,100 (For all 3 units. All profits to a children's charity of buyer's choice.)



12 Community Project
WHERE THE WILD THINGS ARE
Paper, plastic, wood, acrylic paint
NFS



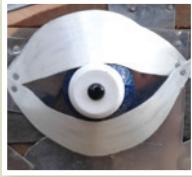
17 Gina Ferguson
WELCOME 2
Recycled rubber, wool, plastic ties
\$10,650



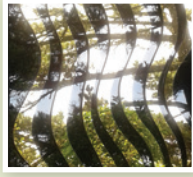
22 Jane and Mario Downes
INSECT GRASSES
Mild steel
Long with Monarch & Caterpillar \$2,000
Long with Dragonfly \$1,850
Short with Monarch & Caterpillar \$2,000
Short with Dragonfly \$1,850
Short with Ladybird \$1,750



27 Blair Fraser
APARTMENTALISATION
Wood, ceramic, wire, steel rods
Complete \$2,200
Small unit \$300
Medium unit \$400
Large unit \$500
Trees \$60 each



32 Katherine Batchelor
BIG FISH
Wood, aluminium, metal
\$1,650



37 Darryl Fagence
TIDAL
Glass
\$795 each



42 John Philips
ALIEN FAUNA
Fiber clay
\$2,480



2 John Mulholland
LOVE OF AIR
Steel plate, automotive paint
\$18,000



6 Gill Gaffield
BABEL & POSTSCRIPT
Babel cut toughened float glass, concrete block (Maquette, ed. 3), Postscript Barbwire
Babel POA
Postscript \$800



10 Bruce Young
CATS AT PLAY GATE
Hot dipped galvanised steel
\$1,500



3 Cherrie James
NEW BEGINNINGS
Clay
\$380



8 Boud van den Bemd
CHESS PIECES
Various wood, paint, oil
\$195



13 Darryl Fagence
FLIGHT
Stainless steel, glass
\$2,800



18 Rose Petterson
LACESHADES
3D printed PLA plastic (UV resistant)
\$310



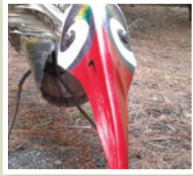
23 Jeff Thomson
TWIRL
Corrugated copper
\$3,900



28 Paul Brunton
WHOSE MOVE
Wood
\$3,250



33 Howard Esler
HOOKED ON NATIVES
Steel bar, concrete, paint
\$1,000 total



38 Andrew Denton
BEWARE THE JUB JUB
Nikau Palm, steel reinforcing bar, found ephemera
\$1,871 Wonderland shillings
(the point being that no amount of money can buy back an extinct species)



43 Ian Fewtrell
GOATS
Corrugated Iron
Kid \$522
Nanny \$765
Billy \$1,025



3 Audrey Boyle
ANCHORAGE
Kareao (supplejack), steel, acrylic paint
POA



7 Ramon Robertson
WEATHERMEN
Treated pine, concrete, mixed media
\$2,700



11 Jane & Mario Dones
TARAXICUM FOREST
Mild and galvanised steel
\$3,000 - \$5,000 each as marked



4 Margaret Johnston
COLONIAL HERITAGE
8230 wine bottle caps, wire
\$2,500 each



9 John Philips
TRIPOD
Fiber clay
Large \$1,000 each
Medium \$900 each



14 Sharonagh Montrose
THE MAGNITUDE OF SPACES
Wood, steel, speakers, audio equipment, solar panel, mirror, turf
\$4,000



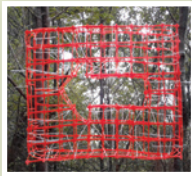
19 Sonja van Kerkhoff
THE TRUISMS
Paint, dubond
\$200



24 Blair Fraser
PISCES MEMORANDUM
Ceramic, fishing line, nylon, stainless steel
Complete \$2,000
Small \$35 each
Medium \$45 each
Large \$55 each



29 John Mulholland
LOVE OF AIR
Plywood, paint, stainless steel
\$750 pair



34 Aaron Frater
MARKERS OF PLACE
Barrier mesh, cable ties
\$150 each (Materials subject to UV degradation)



39 Community Project
BLOOMING PLASTIC BAGS
Recycled supermarket plastic shopping bags, acrylic paint, cable ties
NFS



4 Katherine Batchelor
BOX OF BIRDS
Wood, galvanised pipe, steel, ceramic
\$650 each



8 Bruce Young
HORSE CANTERING GATE
Hot dipped galvanised steel
\$1,200



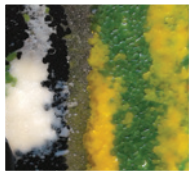
5 Geraldine & David Bayly
FLIGHT PATH
Perspex, nylon, plywood, framing timber, paint, plastic
3m length of birds (7 birds) \$40
5m length of birds (11 birds) \$55
8m length of birds (18 birds) \$75
Striped Panels \$650 each
Chairs \$395 each
Stool \$185 each



10 Bev Goodwin
PACIFICA WELCOME
Powder coated recycled aluminium wire elements, cable ties
\$3,500



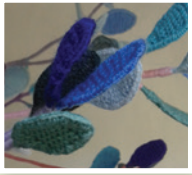
15 Michael Kennedy
SUB URBAN PLACE
Schist rock, mortar, oxide, fabric
\$2,500



20 Vivienne Thomson
SEAGRASS 1
Glass (pate de verre), hypertufa, steel
\$1,250



25 Phil Bonham
DREAMING BON VOYAGE - TE HAERENGA MOEMOE
American Pin Oak (Whangarei), Pohutukawa, outdoor furniture oil
\$4,375



30 Juliette Laird
KISS ME QUICK
Knitting yarn, steel wire
\$500 each



35 Rebecca Rose
NETS
Steel
\$12,900



40 Karl Chilcott
A GARDEN OF STONES
Local stone, Eucalyptus
\$20,000



1 Greg Piper
PIWAKAWAKA TOY
Automotive painted fibreglass, painted steel, stainless steel, rope, PVC pipe
\$3,000



2 Samuel Ludden
TUNA
Ceramic, steel
Large \$495
Medium \$390
Small \$295



3 Zoe Nash
FINDING HOME
Sourced and found mixed media
\$3,950

CONSERVATION TRACK - ENTRY AFTER #36